

The
Rotary
Foundation



**PARTNER WITH
ROTARY FOUNDATION (INDIA)**
Corporate Social Responsibility

www.rotaryfoundationindia.org

Who We Are

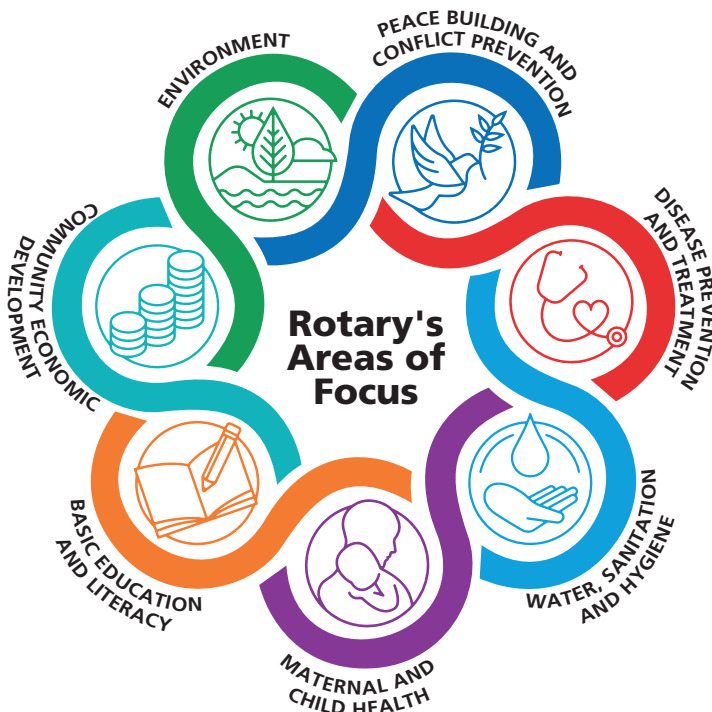
Rotary is a global network of 1.2 Million neighbours, friends, leaders, and problem-solvers who see a world where people unite and take action to create lasting change – across the globe, in our communities, and in ourselves.

For more than 110 years, Rotary's People of Action have used their passion, energy, and intelligence to take action on sustainable projects. From literacy and peace to water and health, we are always working to better our world, and we stay committed to the end.

Rotary members believe that we have a shared responsibility to take action on our world's most persistent issues. Our 46,000+ clubs are working across 7 areas of focus.

Rotary is made up of three parts: Rotary clubs, Rotary International, and The Rotary Foundation. Together, we work to make lasting change in our communities and around the world.

The heart of Rotary is our members, dedicated people who share a passion for community service and friendship. Rotary members share ideas, make plans, hear from the community, and catch up with friends during club programs that fuel the impact we make.

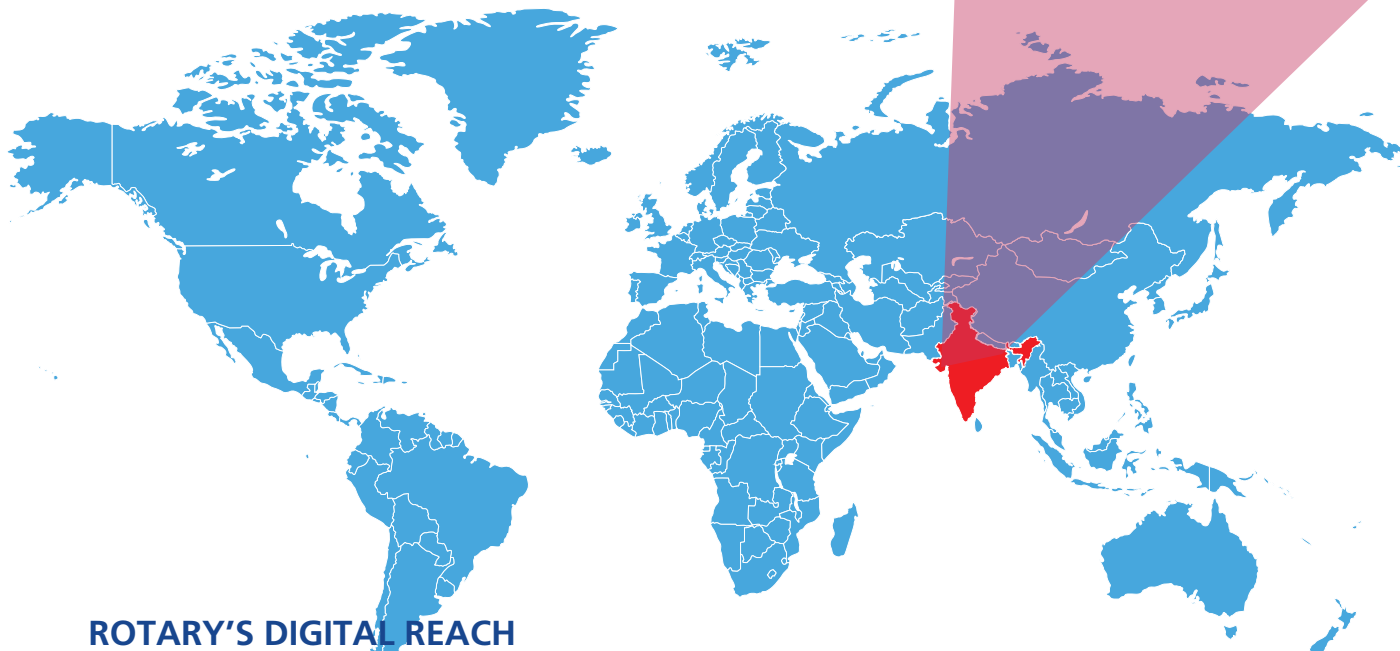


BY THE NUMBERS: GLOBAL

1.2 Million Rotary members
36,949 Clubs
221 Countries

INDIA

1.75 lakhs+ Rotary members
4550+ Rotary Clubs
44 Rotary Districts



ROTARY'S DIGITAL REACH

 **1.1 Million**
Web visits monthly

 **1.2 Million**
Facebook fans

 **480,000**
Twitter followers

How We Work

The Rotary Foundation

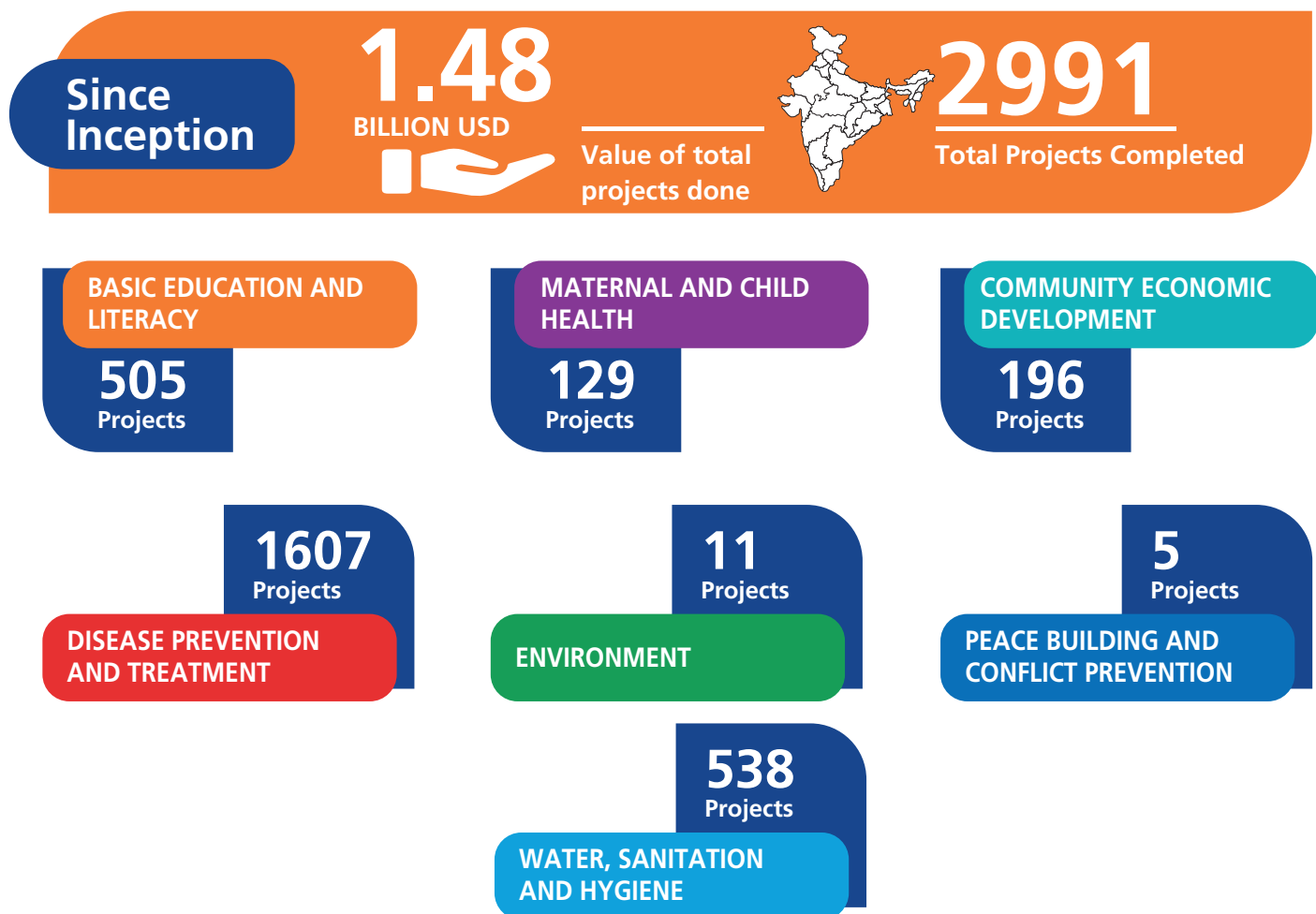
The Rotary Foundation (TRF) transforms your contributions into service projects that change lives both close to home and around the world. Since it was founded more than 100 years ago, the Foundation has spent more than \$4 Billion on life-changing, sustainable projects. With your help, we can make lives better in your community and around the world.

Rotary Foundation (India)

In India, The Rotary Foundation functions

through its associate foundation Rotary Foundation (India) [RF (I)] and is registered as a society in India under the Societies Registration Act of 1860 in February 1988 and provides tax exemption under Section 80G of the Income Tax Act. Rotary Foundation (India) [RF (I)] is also registered with Ministry of Corporate Affairs (MCA) hence, fulfilling the eligibility criteria to act as an implementing agency for undertaking CSR activities. We have pan India reach to implement projects through structured programs with a network of more than 1.7 lakhs Rotarians in 4500 Rotary clubs and 2900 Rotaract clubs.

RF(I) Programs across Areas of Focus



Recognitions



MAHATMA AWARD 2023
for social good and impact

Four-star rating for
14+ years



Most Committed NGO
NGO of the year (India)

UBS FORUMS

Corporate Social Responsibility

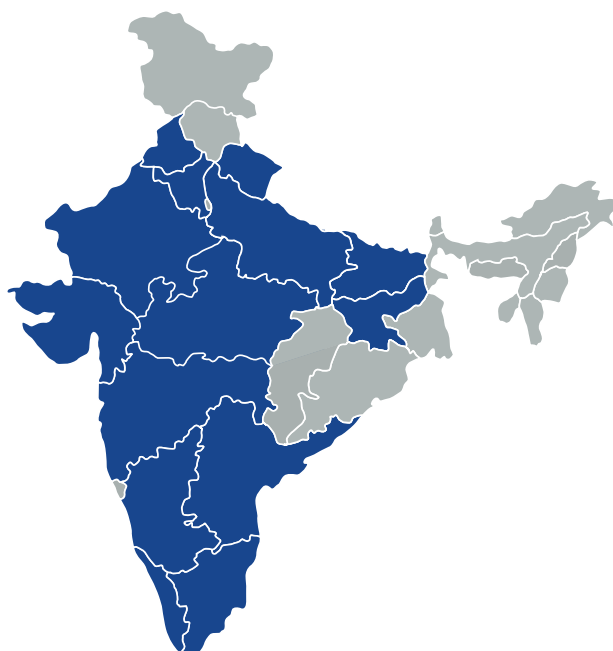
With the introduction of the Companies Act, 2013, there is a statutory obligation for the Corporates to take initiatives towards social, environmental, and economic responsibilities. In the present day scenario, there has been a shift from philanthropy to CSR.

Given Rotary's profile and humanitarian efforts throughout India, Rotary Foundation (India) has

now expanded its partnership base by cultivating corporate relationships for CSR projects and implementing sustainable and impactful humanitarian projects through Rotary clubs/districts. RF(I) started its Pan India CSR operations in October 2016.

All service projects are designed and implemented by members of community-based Rotary Clubs to encourage sustainability and maximize the results of their work.

RFI's National CSR footprint



Section 135 of the Companies Act, 2013

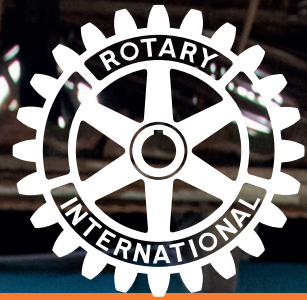
Section 135 of the Companies Act, 2013, inter alia, requires companies having net worth of Rs.500 crores or more, or turnover of Rs.1000 crores or more, or a net profit of Rs.5 crores or more in a financial year to spend at least 2% of the average net profits of the last three years for the company's Corporate Social Responsibility (CSR) policy. Section 135 along with Schedule VII and the corresponding Corporate Social Responsibility Policy Rules were notified on 27 February 2014 and came into effect on 1 April 2014.

What We Do

The work of Rotary begins at the local level, addressing each community's unique concerns. While Rotary members serve in countless ways, we focus our efforts on key areas that encompass some of the most critical and widespread humanitarian needs:

Rotary's CSR India grants program supports projects in Rotary's focus areas that are designed to be effective and sustainable. Rotary brings together community leaders, local cooperating organizations, and other knowledgeable partners and draws on their experience to ensure the most beneficial outcomes.

RF(I) strongly believes in the power of partnerships and collaborative efforts and has rich history of implementing the projects. In partnering with corporates, Rotary Foundation (India) works diligently to try and establish partnerships which are aligned to the core principles of the company/foundation. RF (I) works closely with corporates – large and small – to identify, design and implement alliances that leverage the strengths of the corporate sector.



Rotary has partnered with

190 corporate partner
and received nearly

10 Million USD
CSR funds.



Key Projects

Health Systems Strengthening: Fighting disease

Healthcare for all — “universal healthcare” (UHC) — has been a highly appealing social objective around the globe. RF (I) interventions in the health sector involves strengthening primary health care; which includes preventive, promotive and curative services ensuring that these services are accessible, physically, financially and are culturally sensitive, as well as ensuring availability of these services to the local community.

Key CSR Projects:

1. Improve the capacity of local health care professionals
2. Promote disease prevention programs, with the goal of limiting the spread of communicable diseases and reducing the incidences of non-communicable

diseases and their complications

3. Enhance local communities’ health infrastructure
4. Educate and mobilize communities to help prevent the spread of major diseases
5. Prevent physical disability resulting from disease or injury

Clubs in India are leading the charge on various health issues through interventions on Congenital heart defects in children, COVID, Polio Immunisation, non-communicable diseases such as diabetes; cancer screening and treatment, mobile medical units for last mile intervention, blood banks, burn center, artificial limbs centers amongst others.

Achievements



90+

Dialysis machines
across hospitals



15+

Mobile Medical
Units (MMUs)



6

Upgradation of
Primary Health
Centers (PHCs)



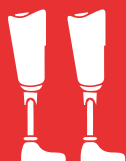
400+

Pediatric Heart
Surgeries



11000+

Cataract
Operations



650+

Beneficiaries of
Artificial Limbs



Promoting Education

With the advent of the Millennium Development Goals (MDGs), significant attention has been given to achieving the goal of Universal Primary Education. Education is the most important lever for social, economic and political transformation and thus act as a potent tool for socio-economic mobility thus enable in building an equitable society. Through its educational interventions, RF (I) aims at significantly improving the quality of education imparted and ensuring that educational opportunities are available to all segments of the society. Rotary's programs focus on the following:

- Involve the community to support programs that strengthen their capacity to provide basic education and literacy to everyone

- Increase adult literacy
- Work to reduce gender disparity in education
- Support basic education and literacy studies for career-minded professionals

Key CSR Projects

- Technology and training (computer labs, installation of smart boards, tablet distribution with adequate training for teachers or administrators on use and teaching methodology)
- Adult Literacy
- Teacher Training
- Classroom construction, upgradation of overall school infrastructure
- Supporting girls' education (reduction in out-of-school dropouts, additional learning opportunities)
- School and Anganwadi refurbishment

Achievements



2700+

Bicycle distribution to girl students



2000+

E-learning systems set-up across schools



125+

Infrastructure upgradation in schools



1000+

Pedagogical Teacher's Training



50+

Computer labs for visually impaired students across schools



3500+

E-tab distribution



Providing Clean Water, Sanitation and Hygiene

The benefits of having access to an improved drinking water source can only be fully realized when there is also access to improved sanitation and adherence to good hygiene practices. Without these basic needs, the lives of millions of children are at risk. For children under five, water- and sanitation-related diseases are one of the leading causes of death. Hence, when people have access to clean water and sanitation, waterborne diseases decrease, children stay healthier and attend school more regularly, and mothers can spend less time carrying water and more time helping their families. Rotary' projects give communities the ability to develop and maintain sustainable water and sanitation systems.

Key CSR Projects

- Improved water sources and sanitation

facilities including toilet construction/ refurbishment

- Water supply (gravity fed systems, piping, tanks, wells, rainwater harvesting, dams and bunds for drinking water supply and groundwater recharge, etc.)
- Rainwater harvesting: dams/bunds/ reservoirs
- Water treatment/purification
- Hygiene and behavior change education and training
- Sanitation (excreta disposal, hand washing and hygiene, wastewater management, solid waste management, vector control)
- Watershed management
- Wash in schools
- Menstrual hygiene management (MHM) in schools
- Hygiene and behavior change education and training

Achievements



90+

Check Dams & Water Sheds



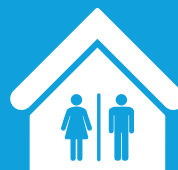
40+

WASH Infrastructure upgradation in schools



30+

Low cost houses construction



234+

Toilet construction in school



100+

Sanitation and Hygiene, behavioral and Vocational training



200+

Toilet construction for households



Growing Local Economies

Economic development is a critical component that drives economic growth in our economy, creating high wage jobs and facilitating an improved quality of life. Rotary supports investments in people to create measurable and enduring economic improvement in their lives and communities.

The Rotary Foundation enables Rotary members to invest in people by creating sustainable, measurable and long term economic improvements in their communities and

Achievements



Technical training centers for differently abled students



400+

Vocational training of students



"Grama Lakshmi" - A microenterprise projects



1800+

Fruit tree plantations leading to improved livelihood in households across 60 villages



3000+

Women trained in vocational skills

Protecting The Environment

We are committed to supporting activities that strengthen the conservation and protection of natural resources, advance ecological sustainability, and foster harmony between communities and the environment. We empower communities to access grants and other resources, embrace local solutions, and spur innovation in an effort to address the causes and reduce the effects of climate change and environmental degradation.

Rotary members are tackling environmental issues the way they always do: coming up with projects, using their connections to change policy and planning for the future.

Key CSR Projects

- Ecological Restroartion wastewater treatment plant
- Creating a High-Density Forest of Native Indian Plants for Biodiversity Conservation by Using Miyawaki Plantation Method.
- Mangrove's Plantation and Multipurpose Community Centre
- Convert farming into natural farming for a healthy society, sustaining the environment, & economic sustainability for farmers



30+

Solar panels in various communities



25+

Decentralised water treatment plants providing access to drinking water to over 2 lakh beneficiaries



86,500

Mangrove Tree plantations



ROTARY INTERNATIONAL SOUTH ASIA OFFICE
Pullman/Novotel Commercial Tower, First Floor,
Asset No.2, Hospitality District, Aerocity (Near IGI Airport),
New Delhi - 110037



twitter.com/rotary



facebook.com/rotary



RotaryInternational



rotaryinternational



rotaryinternational